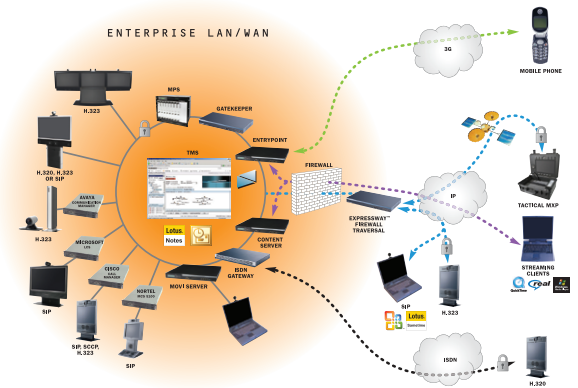




**TANDBERG**



**ADMINISTRATOR GUIDE**

THE COMPLETE GUIDE TO BRINGING VIDEO TO THE PC

- Table of Contents
- To Get You Up and Going
- Login
- Portal
- Configuration
- Accounts
- Call History
- Phone Book
- Contact Information

# TANDBERG

To Get You Up and Going.....	3
Logging In to the System.....	4
About Login.....	4
The Login Display.....	4
Portal.....	5
About Portal.....	5
The Portal Display.....	5
Configuration.....	6
The Configuration Display.....	6
Accounts.....	7
About Accounts.....	7
The Accounts Display.....	7
Call History.....	8
About Call History.....	8
The Call History Display.....	8
Phone Book.....	9
About Phone Book.....	9
The Phone Book Setup Display.....	9
Contact Information.....	10



## ADMINISTRATOR GUIDE

THE COMPLETE GUIDE TO BRINGING VIDEO TO THE PC

We strongly recommend that you look for the latest version of this document at [http://www.tandberg.com/support/documentation.php?p=User\\_Manuals](http://www.tandberg.com/support/documentation.php?p=User_Manuals)

Table of Contents

To Get You Up and Going

Login

Portal

Configuration

Accounts

Call History

Phone Book

Contact Information

## Network Guidelines

To make sure that the users get a good experience using Movi it is necessary with a good quality network. If you experience calls with low quality you should check your network and make sure that the following limits are not exceeded:

- Jitter 200ms
- Packet loss 5%
- Latency 500ms

## Getting Started

Prerequisites:

- Assign a static IP (optional; can also use DHCP), subnet mask and gateway IP address
- SIP uses natively DNS, so the IP address of the DNS server is needed
- The server must be given a name, which must be resolvable through DNS. Example: movi.eu.tandberg.int. This name must be entered into the DNS server.

## First time Configuration of the Server

After mounting the server in accordance with the Installation Sheet (which comes with the TANDBERG Movi server) it will boot up with an IP address provided by the local DHCP server.

This IP address is displayed in the LCD panel. To configure the server you need to connect with an SSH client like for instance PUTTY. Log in as **root** with password **TANDBERG**. Execute the command **erbiium-reconfigure** and follow the instructions. After a reboot the new ip-address will be displayed in the LCD panel. Your Movi server is ready to use!

It is recommended to save a backup of your configuration. This can be done with the command **erbiium-backup-config**. The configuration will be saved with a file name consisting of the date and software version. To list your saved configurations use **erbiium-list-configs**.

# Logging In to the System

## About Login

To log in to the Movi server, enter the IP address of your Movi server in your browser. The login window will now be shown.

Now, enter user name and password. Default values are:

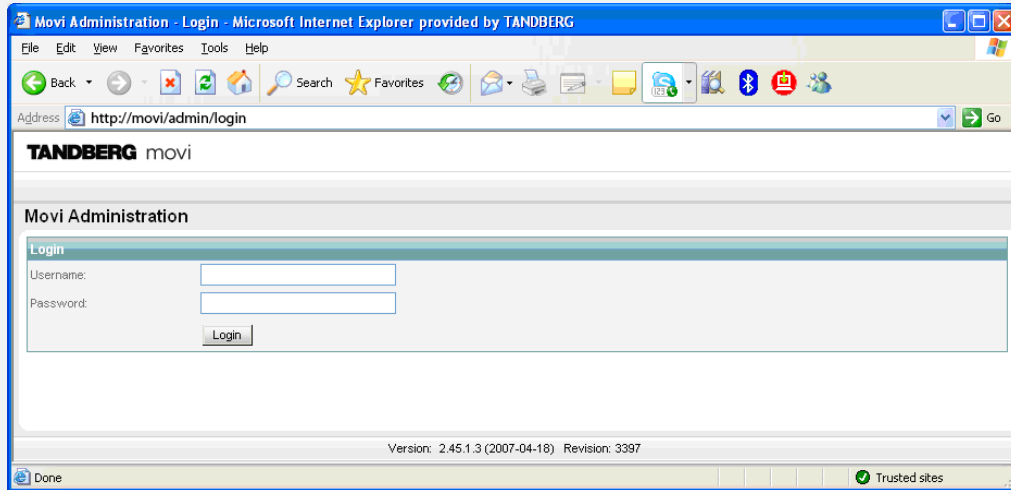
**Username:** Admin

**Password:**

In other words, the password is blank by default. To set your own password, see [Configuration](#).

Click on [Login](#) to enter the Administrator Settings.

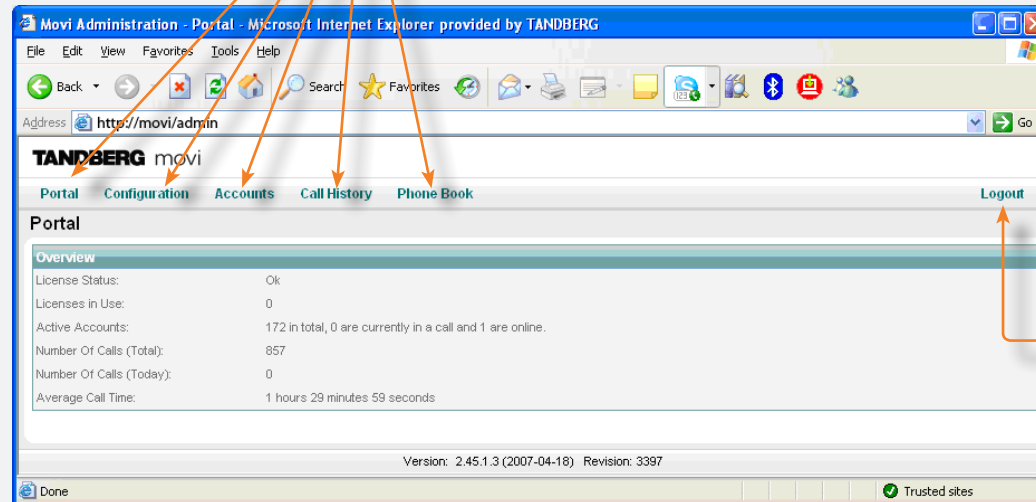
## The Login Display



## About Portal

**Portal** gives an overview of the system, displaying the license status, the number of licenses in use, active accounts, the accumulated number of calls, the number of calls today, and the average call time.

## The Portal Display



Click on these to access the different setup topics.

Click on **Logout** to exit the Administrator Settings.

## The Configuration Display

**Corporate Directory Address.** The IP address of the Directory Service that provides the Corporate Directory phone book. Your system may be connected to directory service such as TANDBERG Management Suite. The Management System may then provide your Movi server with a phone book containing a corporate directory.

**External Manager Address.** Enter the IP address of the External Manager, which will be the TMS server.

**External Manager Path.** Enter the path to the External Manager.

**ELPF Server Address.** Not used.

**SIP Registrar.** SIP Registrar is a server that accepts REGISTER requests and places the information it receives in those requests into the location service for domain it handles.

**User Account Name.** Available settings are **Cookie number**, **Local user name** (log on name on machine), **Remote user name** (LDAP, not working in current version), and **User can change** (User can set their own user name). Default setting is **Cookie number**.

**Option Keys.** Not applicable to this version.

**Software Upgrade.** Browse for the new software image and press Upgrade to install.

The screenshot shows the 'Movi Administration - Configuration' page. The 'General Settings' section includes fields for Corporate Directory Address (10.47.1.10), Corporate Directory Path (tms/public/external/phonebook/phone), External Manager Address (10.47.1.10), External Manager Path (tms/public/external/management/sys), Server Address (10.47.1.22), ELPF Server Address (10.47.1.22), SIP Proxy (10.47.1.22), SIP Registrar (rd.tandberg.net), System Name (Movi Server), User Account Name (Local User Name), User Display Name (Yes), Show Local Registrations (Yes), Admin Username (admin), Admin Password, and Admin Password (Retype). The 'Bandwidth Settings' section includes Automatic (384), Minimum (128), Medium (256), and Maximum (768). The 'Option Keys' section has buttons for Update, Generate, and Upload. The 'Software Upgrade' section has a file browser and an Upgrade button. The footer shows 'Version: 2.45.1.3 (2007-04-18) Revision: 3397'.

**Corporate Directory Path.** Enter the path to Corporate Directory phone book of the Directory Service.

**Server Address.** Displays the IP address of the Server.

**SIP Proxy.** This is the server all outgoing messages are sent to. It decides if the message shall be sent to a client or to a proxy in a different domain.

**System Name.** Name of the Movi Server.

**User Display Name.** **Yes** means user can change username, **No** means no change possible.

**Show Local Registrations.** If you have endpoints registered to the SIP Registrar within Movi you need to set this to **Yes** to be able to see the endpoints in the phonebook.

**Admin Username.** Here you can change the login name for the administrator.

**Admin Password.** Here you can change the password for the administrator.

**Admin Password (Retype).** Retype your new password.

**Bandwidth Settings.**

**Automatic/Minimum/Medium/Maximum.** Assign a value to this setting, should be a number between 128 and 768.

## About Accounts

This page displays the users registered to the Movi Server.

## The Accounts Display

**TANDBERG movi**

Portal Configuration **Accounts** Call History Phone Book Logout

**Accounts**

**Overview**

Total:	172
Online / In Call:	1 / 0

Displayname	User	Status	Performance	Expiry	
680131	680131	Offline	Automatic	2007-08-12	Delete
681187	681187	Offline	Automatic	2007-07-23	Delete
681980	681980	Offline	Automatic	2007-07-26	Delete
682341	682341	Offline	Automatic	2007-08-16	Delete
684401	684401	Offline	Automatic	2007-08-06	Delete
685071	685071	Offline	Automatic	2007-08-19	Delete
685488	685488	Offline	Automatic	2007-07-31	Delete
687233	687233	Offline	Automatic	2007-08-07	Delete
687618	687618	Offline	Automatic	2007-08-16	Delete
688721	688721	Offline	Automatic	2007-08-13	Delete
689251	689251	Offline	Automatic	2007-08-16	Delete
689381	689381	Offline	Automatic	2007-08-06	Delete
689813	689813	Offline	Automatic	2007-08-08	Delete
Administrator	Administrator	Offline	Automatic	2007-06-25	Delete
Administrator	Administrator	Offline	Automatic	2007-06-29	Delete
Administrator	Administrator	Offline	Automatic	2007-07-16	Delete
ali.sabil	ali.sabil	Offline	Automatic	2007-08-20	Delete
andreas.kaljord	andreas.kaljord	Offline	Automatic	2007-08-02	Delete
andreas.kaljord	andreas.kaljord	Offline	Automatic	2007-07-09	Delete

Version: 2.45.1.3 (2007-04-18) Revision: 3397

Trusted sites

## About Call History

This page displays the call history for the server. Enter a start date and an end date to limit your search.

## The Call History Display

**TANDBERG movi**

Portal Configuration Accounts **Call History** Phone Book Logout

### Call History

**Overview**

Number Of Calls (Total): 857  
 Number Of Calls (Today): 0  
 Average Call Time: 1 hours 29 minutes 59 seconds

**Search**

Start Date:   
 End Date:

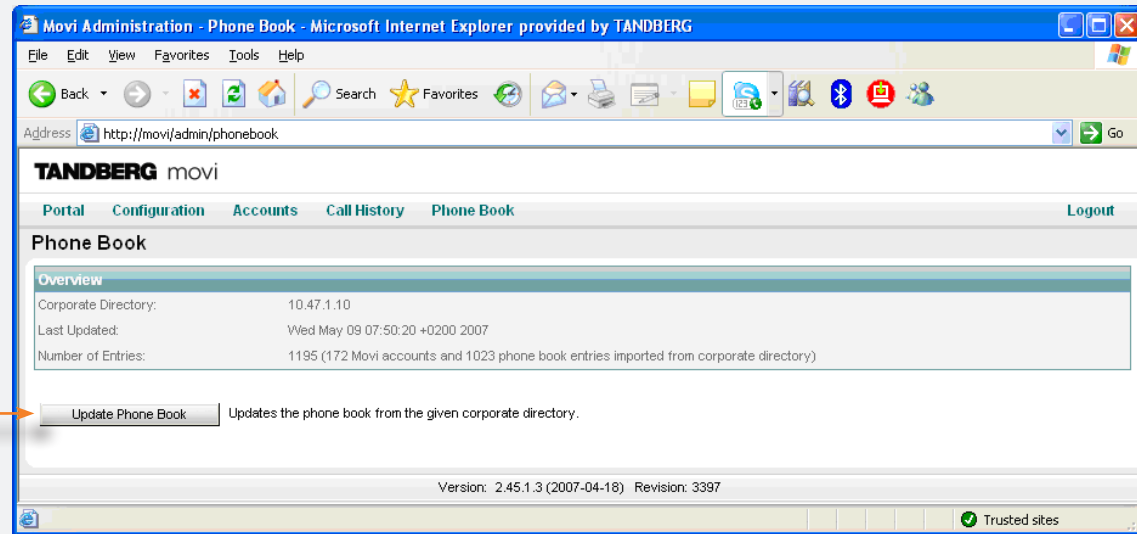
Display Name	Direction	Remote URI	Date	Start Time	End Time	Duration	Status
kjetil.smith	→	kjetil.smith@rd.tandberg.net	2007-05-24	14:05:45	14:07:57	2 minutes 12 seconds	Ended
kjetil.smith	→	kjetil.smith@rd.tandberg.net	2007-05-24	10:33:19	10:33:25	6 seconds	Ended
kjetil.smith	→	kjetil.smith@rd.tandberg.net	2007-05-24	09:41:26	09:41:30	4 seconds	Ended
kjetil.smith	→	kjetil.smith@rd.tandberg.net	2007-05-24	07:51:05	07:52:01	56 seconds	Ended
LabPC2-Beint	→	movilab.150@rd.tandberg.net	2007-05-23	16:40:43	16:42:18	1 minutes 35 seconds	Ended
LabPC4-Beint	→	movilab.150@rd.tandberg.net	2007-05-23	16:20:45	16:23:35	2 minutes 50 seconds	Ended
LabPC2-Beint	→	movilab.150@rd.tandberg.net	2007-05-23	14:25:22	14:27:01	1 minutes 39 seconds	Ended
ketil.samuelson	→	7623239@rd.tandberg.net	2007-05-23	12:24:28	12:31:03	6 minutes 35 seconds	Ended
ketil.samuelson	→	760822501@rd.tandberg.net	2007-05-23	11:25:10	11:28:45	3 minutes 35 seconds	Ended
kjetil.smith	→	kjetil.smith@rd.tandberg.net	2007-05-23	10:40:27	10:40:33	6 seconds	Ended
kjetil.smith	→	kjetil.smith@rd.tandberg.net	2007-05-23	10:38:56	10:39:01	5 seconds	Ended
kjetil.smith	→	kjetil.smith@rd.tandberg.net	2007-05-23	09:57:37	09:57:42	5 seconds	Ended

Version: 2.45.1.3 (2007-04-18) Revision: 3397

## About Phone Book

If you have configured **Corporate Directory** to your TMS Server<sup>1</sup> you can click the **Update Phone Book** button to download phonebook(s) from TMS. Which phonebook(s) to download must be configured on TMS. In addition, the phone book will be updated every hour.

## The Phone Book Setup Display



<sup>1)</sup> TMS: TANDBERG Management Suite

# TANDBERG

Philip Pedersens vei 20, 1366 Lysaker, Norway

Telephone: +47 67 125 125

Fax: +47 67 125 234

Video: +47 67 126 126

E-mail: tandberg@tandberg.com